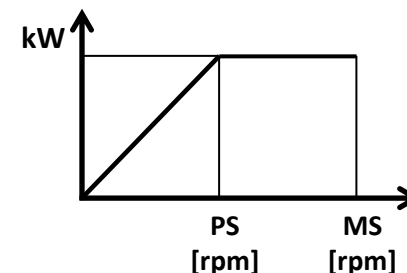
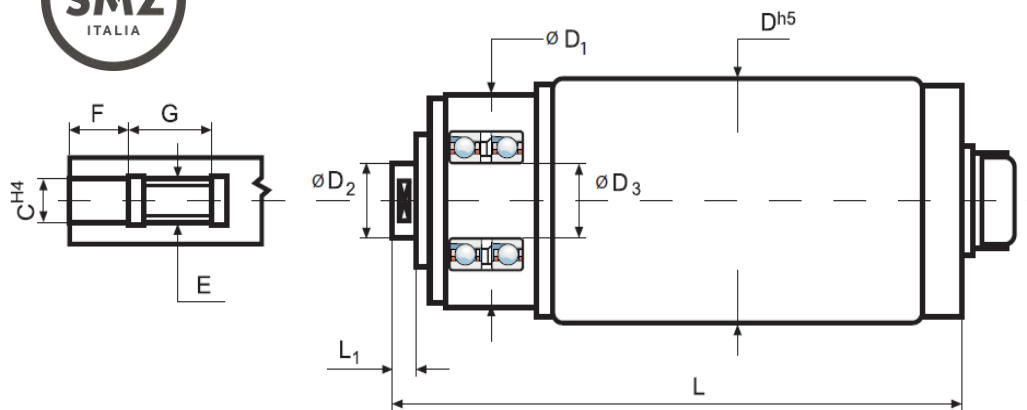




Elettromandri per rettifica tipo SGS



Tipo	Dimensioni										Lubrificazione	Servizio S6 - 60%			
	D	D1	D2	D3	L	L1	C	E	F	G		PS [rpm]	MS [rpm]	Potenza [kW]	Coppia [Nm]
SGS 80 / 90000 / 3	80	65	16	17	213	6	6	M6 x1	9	11	AIR / OIL	90.000		3	0,3
SGS 100 / 105000 / 2	100	65	13	15	209	6	8	M8 x1.25	12	14	AIR / OIL	105.000		2	0,18
SGS 100 / 90000 / 3	100	65	16	17	213	6	9	M9 x1.25	13	14	AIR / OIL	90.000		3	0,3
SGS 100 / 75000 / 5	100	71	18	20	250	8	10	M10 x1.5	15	19	AIR / OIL	75.000		5	0,6
SGS 100 / 60000 / 6	100	77	23	25	269	12	14	M14 x1.5	21	19	AIR / OIL	60.000		6	1
SGS 120 / 90000 / 3	120	65	16	17	213	6	9	M9 x1.25	13	14	AIR / OIL	90.000		3	0,3
SGS 120 / 60000 / 9	120	77	23	25	270	9	14	M14 x1.5	21	19	AIR / OIL	60.000		9	1,4
SGS 120 / 51000 / 15	120	98	28	30	327	9	16	M16 x1.5	24	19	AIR / OIL	32.000	51.000	15	4,5
SGS 120 / 42000 / 15	120	98	38	40	335	11	22	M22 x2	34	25	AIR / OIL	32.000	42.000	15	4,5
SGS 120 / 30000 / 15,5	120	120	48	50	389	13	28	M28 x2	42	25	AIR / OIL	20.000	30.000	15,5	7,4
SGS 150 / 42000 / 19,5	150	98	38	40	335	11	22	M22 x2	34	25	AIR / OIL	30.000	42.000	19,5	6,3
SGS 150 / 30000 / 23	150	127	53	55	407	14	32	M32 x2	46	25	AIR / OIL	17.000	30.000	23	13
SGS 150 / 24000 / 23	150	127	63	65	411	16	36	M36 x2	50	25	AIR / OIL	17.000	24.000	23	13
SGS 150 / 18000 / 18	150	127	63	65	395	16	36	M36 x2	50	25	AIR / OIL	12.000	18.000	18	14,3
SGS 170 / 33000 / 37	170	130	48	50	357	13	28	M28 x2	42	25	AIR / OIL	18.000	33.000	37	19,6
SGS 170 / 30000 / 26	170	135	53	55	379	14	32	M32 x2	46	25	AIR / OIL	10.000	30.000	26	24,8
SGS 170 / 24000 / 36,5	170	140	63	65	383	16	36	M36 x2	50	25	AIR / OIL	16.000	24.000	36,5	21,8
SGS 170 / 18000 / 36,5	170	148	68	70	419	18	36	M36 x2	50	25	AIR / OIL	12.000	18.000	36,5	29
SGS 170 / 12000 / 26	170	140	68	70	419	18	36	M36 x2	50	25	GREASE	8.000	12.000	26	31

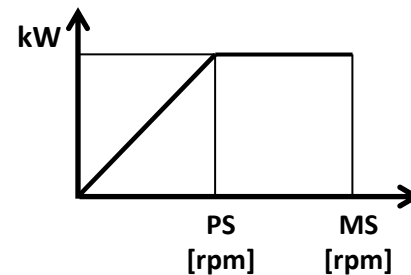
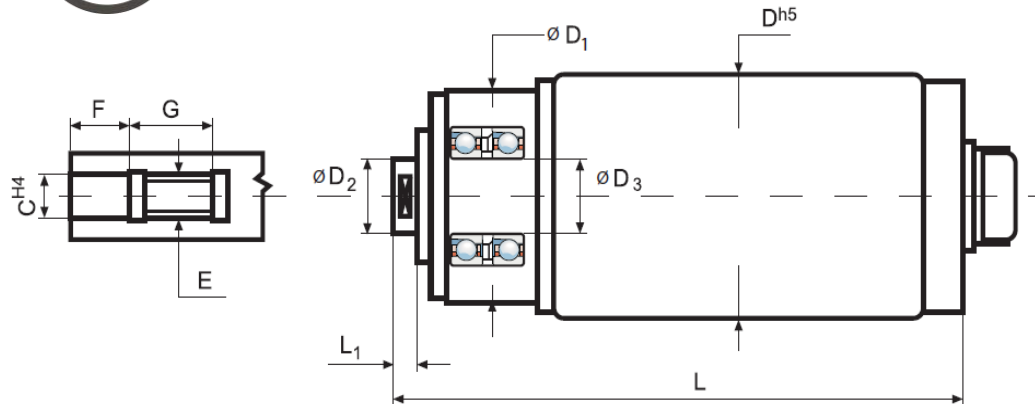
SMZ ITALIA Via Brandizzo 184/186 -10088 Volpiano (Torino) Italia

Tel. +39 011 995 35 34 – Fax +39 011 995 35 50

E-mail : smz@smzitalia.com - Internet : www.smzitalia.com



Elettromandrini per rettifica tipo SGP



Tipo	Dimensioni										Lubrificazione	Servizio S6 - 60%			
	D	D1	D2	D3	L	L1	C	E	F	G		PS [rpm]	MS [rpm]	Potenza [kW]	Coppia [Nm]
SGP 100 / 90000 / 4	100	80	18	20	230	5,5	10	M10 x1.5	15	19	AIR / OIL	90.000		4	0,4
SGP 100 / 75000 / 5	100	80	23	25	249	6	14	M14 x1.5	21	19	AIR / OIL	75.000		5	0,6
SGP 120 / 75000 / 7	120	80	23	25	249	5,5	14	M14 x1.5	21	19	AIR / OIL	75.000		7	0,8
SGP 120 / 60000 / 13	120	85	28	30	293	6	16	M16 x1.5	24	19	AIR / OIL	30.000	60.000	13	4,1
SGP 120 / 30000 / 18	120	88	53	55	337	10	32	M32 x2	46	25	AIR / OIL	24.000	30.000	18	7,2
SGP 150 / 45000 / 27	150	105	43	45	355	8	28	M28 x2	42	25	AIR / OIL	20.800	45.000	27	12,4
SGP 150 / 30000 / 30	150	130	63	65	393	12	36	M36 x2	50	25	AIR / OIL	16.000	30.000	30	17,9

SMZ ITALIA Via Brandizzo 184/186 -10088 Volpiano (Torino) Italia
 Tel. +39 011 995 35 34 – Fax +39 011 995 35 50
 E-mail : smz@smzitalia.com - Internet : www.smzitalia.com